

Thursday 31st July 2025

Nasdaq 100 Intraday: Key Support Focus 23555

Important level to watch – **23555 (4 hour chart)**
Bollinger Mid-Average

Potential Upside Bias:

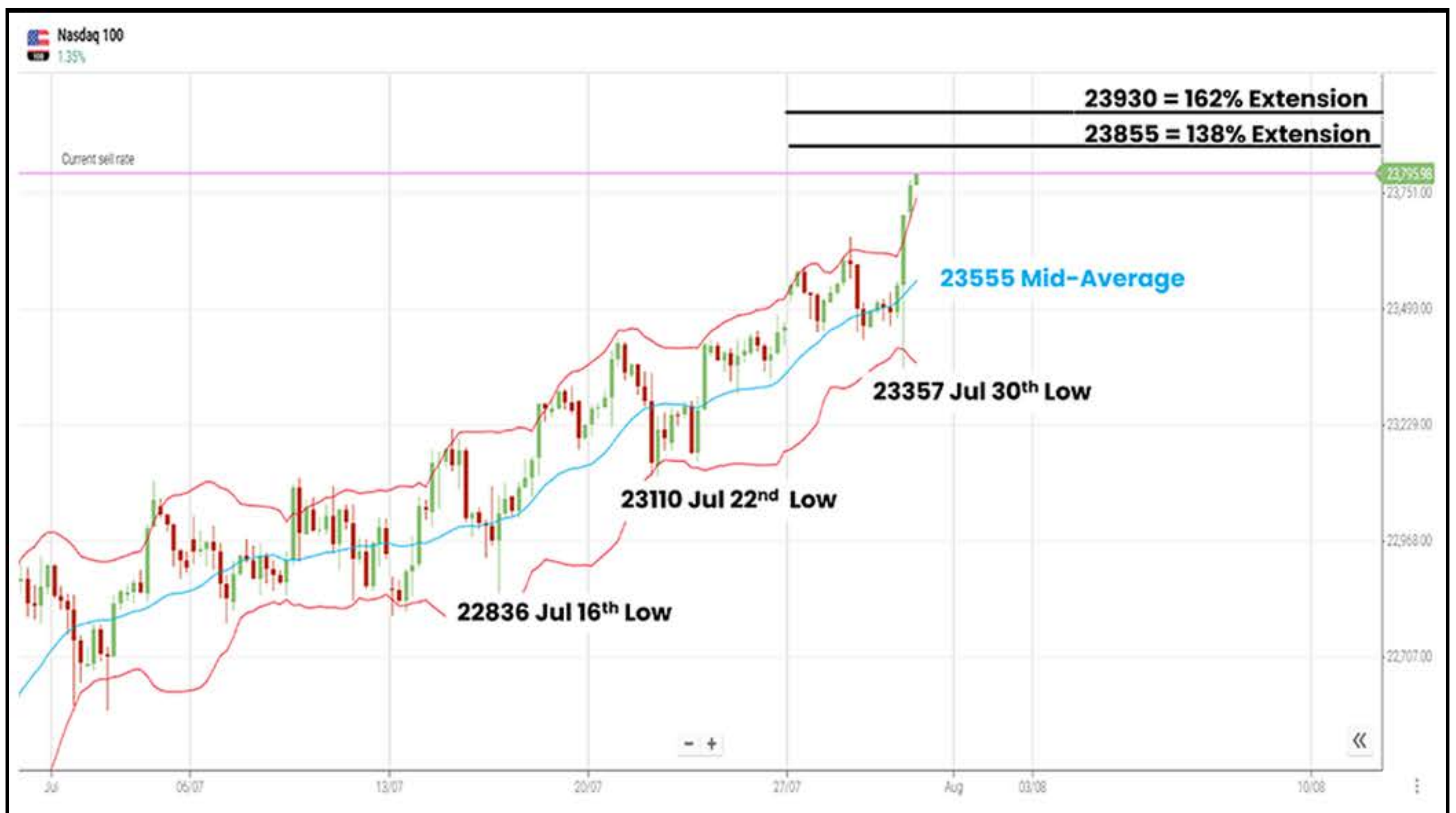
While support at 23555 (Bollinger mid-average) remains intact the risks are to test resistance at 23855 (138% extension). 4 hourly closing breaks above 23855 suggest potential to challenge 23930 (162% extension).

Potential Downside Bias:

4 hourly closes below support at 23555 suggest risks to test 23357 (July 30th low).

Current Outlook:

Upside potential while above 23555.



Nasdaq 100 Volatility Driver:

Thursday: 1330 BST USD PCE Index (Fed's Preferred Inflation Gauge)

Amazon, Apple Earnings (after the close)

Disclaimer:

This presentation has been designed and delivered by The Corellian Academy Limited, company number 11596572 whose registered address is 10 Western road, Romford, Essex RM1 3JT United Kingdom. Corellian (or The Firm) operate under a single title and have no affiliations with any entity other than the company. Information contained in this presentation is intended for the use of the recipient only and is confidential. Any dissemination, distribution, copying or use of this presentation without prior permission of the addressee is strictly prohibited.

Corellian is a provider of educational and information services which are delivered by way of newsletters, research documents, digital videos, webinars, live classroom events and other written products in the field of global financial markets trading. Corellian does not provide financial advice and is not authorised by the Financial Conduct Authority. Corellian does not accept liability for how you choose to engage in financial transactions. All opinions and judgements expressed in this presentation and all projections, forecasts and statements concerning future events or possible results achieved by Corellian are personal opinions, judgements, projections, forecasts, and statements of Corellian and result from the interpretation by Corellian of the information that was in its possession at the date of preparation of this presentation.

Any views and perspectives offered within this presentation are for the purposes of education and information only. Any market analysis, news or information supplied by Bloomberg, CNBC, Reuters or any other third-party provider, is from the public domain and used for educational and informational purposes only and are in no way to be construed as financial or investment advice. Corellian do not provide financial or investment advice and will not be held responsible for any misunderstanding or misuse of such information that results in a negative outcome. As a result, anyone participating in this presentation must form their own independent view as to such opinions, judgements, projections, forecasts, or statements.

The information herein is based on information obtained from sources believed to be reliable, but Corellian does not represent or warrant that it is accurate and complete or that the services herein are appropriate for any person. This presentation is for educational and informational purposes only and is not, and may not, be relied on in any manner as legal, tax, investment, accounting or other advice or as an offer to sell or a solicitation of an offer of any security or service. Certain information contained herein constitutes "forward-looking statements," which can be identified using terms such as "may", "will", "should", "expect", "anticipate", "project", "estimate", "intend", "continue," "target" or "believe" (or the negatives thereof) or other variations thereon or comparable terminology. Due to various risks and uncertainties, actual events or results or actual performance of the services offered herein may differ materially from those reflected or contemplated in such forward-looking statements.

As a result, the recipient should not rely on such forward-looking statements in making its decisions to pursue the services or products offered herein. No representation or warranty is made as to future performance or such forward-looking statements. All opinions and judgements expressed in this presentation and all projections, forecasts and statements concerning future events or possible results achieved by Corellian are personal opinions, judgements, projections, forecasts, and statements of Corellian and result from the interpretation by Corellian of the information that was in its possession at the date of preparation of this presentation.

S&P 500: S&P 500 is a trademark of Standard & Poor's Financial Services LLC.

ASX 200: S&P® is a trademark of Standard & Poor's Financial Services LLC. ASX® is a trademark of the Australian Securities Exchange.

USA 30: USA 30 is a trademark of Standard & Poor's Financial Services LLC.